



62

NO.62  
FIGARO STREET

# Specifications

<b>Foundation</b>	Foundation system to engineer design
<b>Super Structure</b>	Reinforced concrete beam and slab system and/or structural steel
<b>Walls</b>	Masonry walls for both external and internal
<b>Roofs</b>	Reinforced concrete flat roof / metal roof with complete system
<b>Waterproofing</b>	Approved waterproofing system with warranty at wet area
<b>Ceiling</b>	Fibrous ceiling board with emulsion paint finish at following areas: Living, dining and bedroom, Bathroom, powder room and kitchen
<b>External Wall Finishes:</b>	
<b>Yard, Car-Porch, Balcony</b>	Plaster and Painted
<b>Boundary Wall</b>	Plaster and Painted
<b>Internal Wall Finishes:</b>	
<b>Living Dining, Utility room, Household shelter, and Bedroom</b>	Plaster / Skim Coat with Emulsion paint
<b>Wet Kitchen and Bathroom</b>	Ceramic / Homogenous Tiles
<b>Bathroom feature (If applicable)</b>	Homogenous Tiles / Granite
<b>Master Bathroom</b>	Marble
<b>Windows</b>	Powder coated aluminium framed comes with float / tempered / laminated glass where appropriate
<b>Gate</b>	Remoted controlled swing / sliding gate with side gate
<b>Doors</b>	Timber door with veneer finish and necessary ironmongeries
<b>Shower Screen</b>	Tempered glass shower screen with necessary ironmongeries and fitting
<b>Carpentry:</b>	
<b>Wardrobe</b>	Customise built in wardrobe with drawers and necessary fittings in laminate finish
<b>Vanity Cabinet</b>	Customise Built in Cabinet and Mirror

<b>Kitchen Carpentry</b>	<ul style="list-style-type: none"><li>• Customise built in wooden cabinet with soft closing mechanism for drawer and doors for both dry and wet kitchen</li><li>• Counter top with sink and tap provided</li></ul>
--------------------------	--

## **Sanitary Fitting Provision:**

<b>Provision of the following fitting</b>	<ul style="list-style-type: none"><li>• Wash basin and Mixer tap</li><li>• Pedestal water closet</li><li>• Shower cubicle with shower mixer</li><li>• Paper roll holder</li><li>• Hand spray gun with valve control</li></ul>
---	---

<b>Electrical Provision</b>	<ul style="list-style-type: none"><li>• TV walls to have data, tv and electrical socket</li><li>• Bed side to have telephone and electrical socket</li></ul>
-----------------------------	--

<b>Air-Conditioning</b>	Inverter air-condition or split unit air conditioners to living, dining and bedrooms with conceal or boxed up ducting works
-------------------------	---

<b>Water Heater</b>	1 Storage heater for bathroom
---------------------	-------------------------------

<b>Landscape</b>	Top Soil with Landscaping
------------------	---------------------------

<b>Internal Floor Finishes:</b>	Skirting to be provided and to match the floor finish
---------------------------------	---

<b>Living, Dining, Powder room</b>	Marble
------------------------------------	--------

<b>Utility and Bathroom</b>	Homogenous Tiles
-----------------------------	------------------

<b>Staircase Steps</b>	Parque Flooring / Solid Timber
------------------------	--------------------------------

<b>Staircase Landing</b>	Granite / Parquet
--------------------------	-------------------

<b>Household Shelter</b>	Homogenous Tiles
--------------------------	------------------

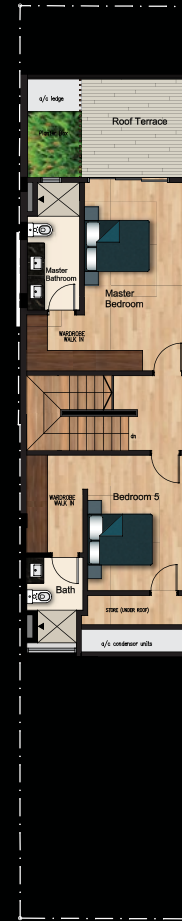
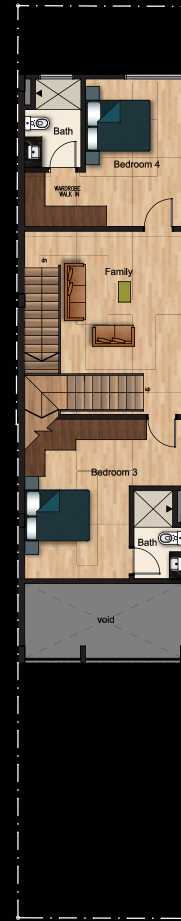
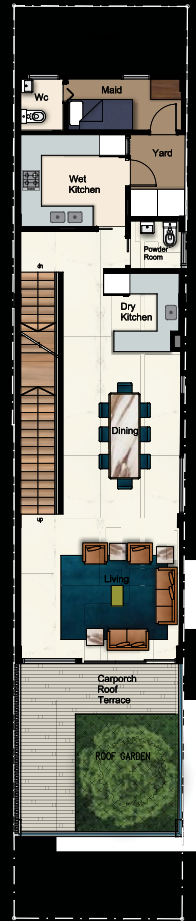
<b>Bedroom and Family Area</b>	Parquet Flooring
--------------------------------	------------------

<b>Kitchen Appliances:</b>	Hob, Hood, Microwave, Fridge, Oven, Wine Chiller
----------------------------	--



# Floor Plan

Legend



1st Storey  
(135 sqm / 1453 sqft)



2nd Storey  
(113 sqm / 1216 sqft)



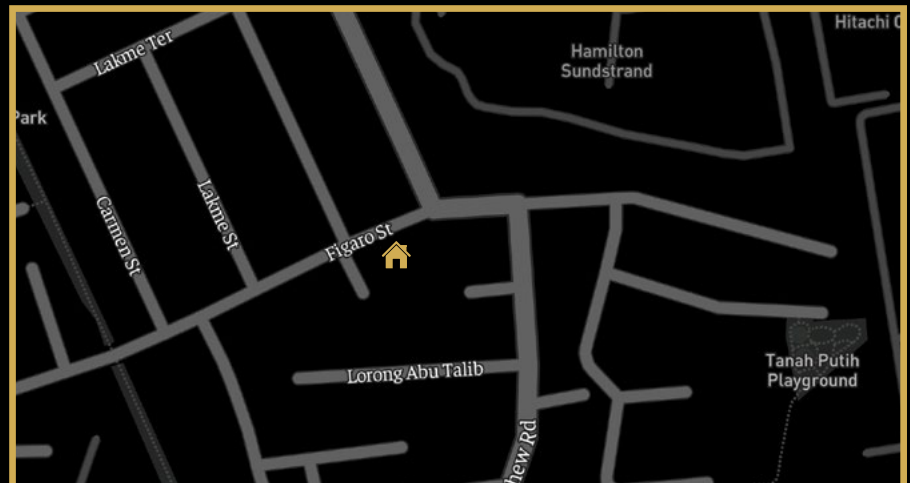
3rd Storey  
(87 sqm / 936 sqft)



Attic  
(87 sqm / 936 sqft)

# Executive Summary

<b>Location</b>	No. 62 Figaro Street Singapore 458371
<b>District</b>	15
<b>Site Area</b>	135 sqm / 1456 sqft
<b>Tenure</b>	Freehold
<b>Estimated T.O.P</b>	2nd Quarter 2020
<b>Project Description</b>	3 Storey Intermediate Terrace with an Attic
<b>Layout Description</b>	2 Carpark Lots 1 Powder Room 5 Bedrooms with attached Bathrooms 1 Maid's Room with attached Bathroom
<b>Transportation</b>	Bedok MRT (Bus 10E, 10, 12, 13, 14E, 14, 16, 42)
<b>Nearby Shopping Centres</b>	Siglap Centre, Bedok Mall
<b>Groceries and Supermarkets</b>	Giant (Siglap Centre), NTUC Fairprice Finest (Bedok Mall)
<b>Primary Schools</b>	St. Stephen's School, Ngee Ann Primary School, East Coast Primary School Opera Estate Primary School
<b>Secondary Schools</b>	Victoria School, Saint Patrick School, CHIJ Katong Convent Ping Yi Secondary School, Tanjong Katong Girls' School
<b>Junior College</b>	Victoria Junior College



A Premium Development by



[www.sevensgroup.sg](http://www.sevensgroup.sg)

While every reasonable care has been taken in preparing the marketing materials, the developer and its agents cannot be held responsible for any inaccuracies or omissions. All statements, information and specifications are believed to be correct at the time of print but may be subject to changes and are not to be regarded as statements or representations of fact and shall not form part of any offer or contract nor constitute any warranty by us. All plans are subjected to any amendments approved by the relevant authority. Art renderings and illustrations are artist's impressions only and cannot be regarded as representations of fact. All areas are approximate measurements only and are subject to final survey.